

BRUNSWICK COUNTY SCHOOLS

COAST WINDOW REPLACEMENT

1109 OLD OCEAN HWY.
BOLIVIA, NC 28422

REI PROJECT NO. 023CLT-085

DATE: 08-20-23



ENGINEERS

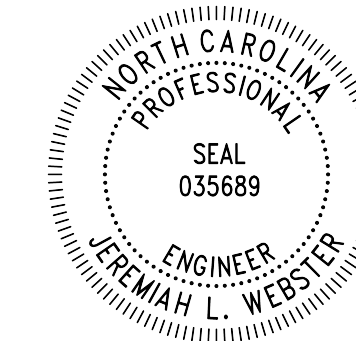
Engineering solutions for tomorrow®

1927 J.N. PEASE PLACE | SUITE 201
CHARLOTTE, NC 28262

NORTH CAROLINA
ENGINEERING FIRM
LICENSE # C-1520

www.reiengineers.com

SEALS:



PROJECT NAME:

BRUNSWICK COUNTY
SCHOOLS

COAST WINDOW
REPLACEMENT

1109 OLD OCEAN HWY.
BOLIVIA, NC 28422

PROJ. NO:

023CLT-085

ISSUE:

NO.	DATE	DESCRIPTION

THIS LINE IS 1 INCH ON
THE ORIGINAL DRAWING

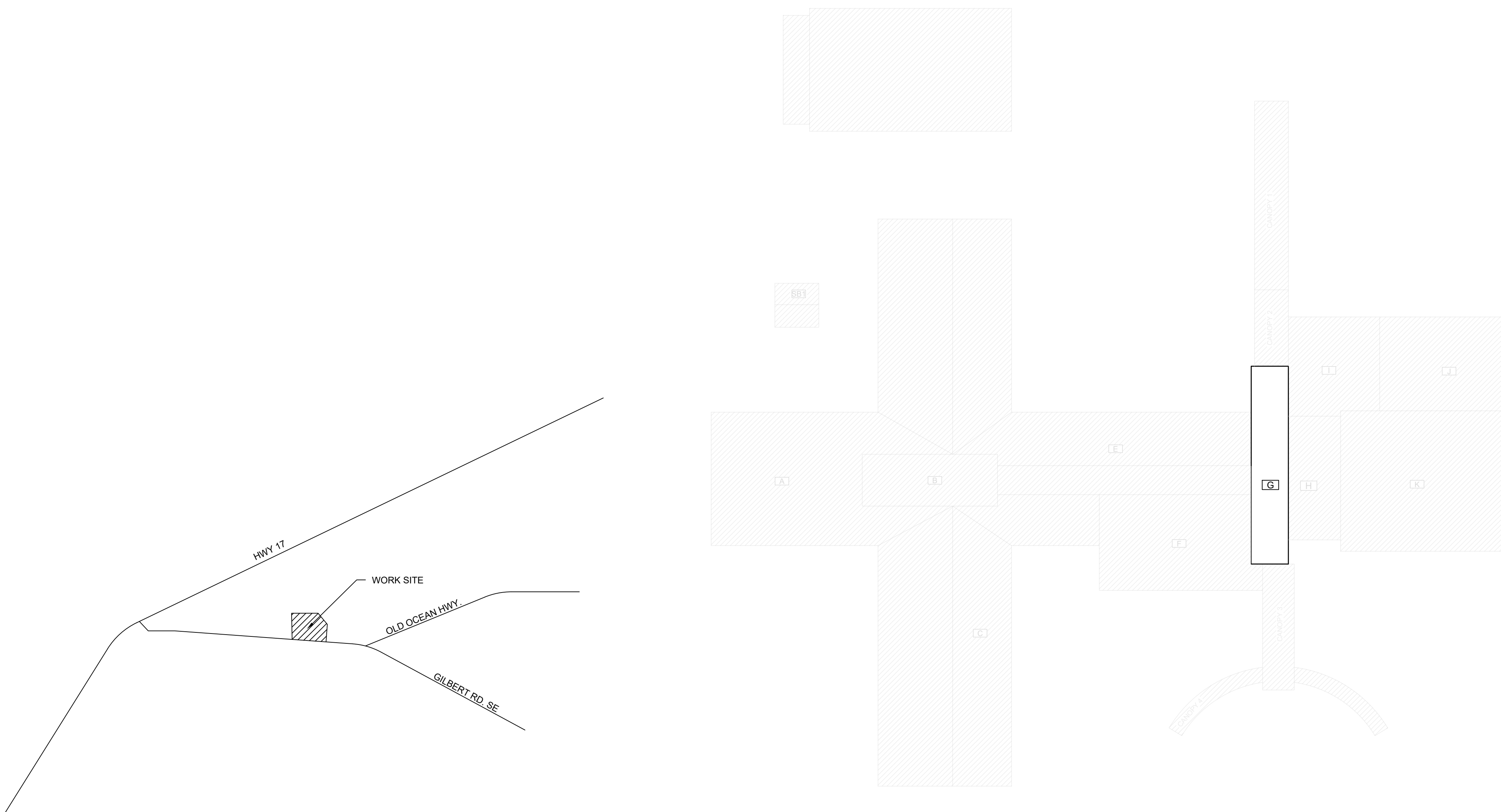
IF IT IS NOT 1 INCH ON THIS PAGE,
SCALE DRAWING ACCORDINGLY.

SHEET TITLE:

COVER

DRAWING:

G-001



KEY
— ROOF EDGE
(RE) ROOF AREA INDICATOR
INCLUDED IN CONTRACT
NOT IN CONTRACT



GENERAL NOTES:

- THESE DOCUMENTS ARE THE PROPERTY OF REI ENGINEERS, INC. (REI) AND REI RETAINS ALL RIGHTS THEREIN, INCLUDING COPYRIGHTS. IT MAY ONLY BE USED IN A MANNER CONSISTENT WITH REI'S RIGHTS WHILE REI IS PROVIDING SERVICE FOR THE SPECIFIC PROJECT IDENTIFIED OR REFERRED TO HEREIN OR EXTENSIONS THERETO. IT MAY NOT BE USED FOR ANY OTHER PURPOSE EXCEPT WITH THE EXPRESS WRITTEN AGREEMENT OF, AND COMPENSATION TO, REI ENGINEERS, INC.
- DIMENSIONS, DETAIL COMPONENTS AND EQUIPMENT PENETRATION LOCATIONS ARE FOR INFORMATION ONLY. CONTRACTOR IS RESPONSIBLE TO FIELD VERIFY ALL INFORMATION PROVIDED.
- ONLY ONE DETAIL INDICATOR MAY BE SHOWN FOR EACH TYPE OF ROOF PENETRATION. ALL OTHER SIMILAR PENETRATIONS ARE TO BE FLASHED AS REQUIRED BY THE TYPICAL DETAIL INDICATOR, UNLESS OTHERWISE NOTED.
- NOTES ARE INTENDED TO PROVIDE TYPICAL LOCATIONS OF WORK. IT IS THE CONTRACTORS RESPONSIBILITY TO QUANTIFY ALL LOCATIONS.

DETAIL NOTES

- LIGHT LINES REPRESENT EXISTING CONSTRUCTION TO REMAIN AND DARK LINES REPRESENT NEW COMPONENTS TO BE PROVIDED.

ELEVATION NOTES

- ELEVATIONS ARE PROVIDED FOR REFERENCE. ACTUAL CONDITIONS MAY VARY ON EACH BUILDING ELEVATION. CONTRACTOR SHALL FIELD VERIFY CONDITIONS PRESENT ON EACH ELEVATION.

ABBREVIATION LIST:			
AB	ABANDONED	MIN.	MINIMUM
ALUM.	ALUMINUM	N.I.C	NOT IN CONTRACT
BLDG.	BUILDING	NOM.	NOMINAL
CJ	CONTROL JOINT	N.T.S.	NOT TO SCALE
DS	DOWNSPOUT	O.C.	ON CENTER
EJ	EXPANSION JOINT	OF	OVERFLOW
EPDM	ETHYLENE-PROPYLENE DIENE MONOMER	PS	PRESSURE SENSITIVE POLYVINYL CHLORIDE
EX.	EXISTING	SF	SQUARE FEET
GALV.	GALVANIZE	S.S.	STAINLESS STEEL
GA.	GAUGE	SIM	SIMILAR
HT	HEIGHT	TERM.	TERMINATE/TERMINATION
MAX.	MAXIMUM	TYP.	TYPICAL

DRAWING INDEX:

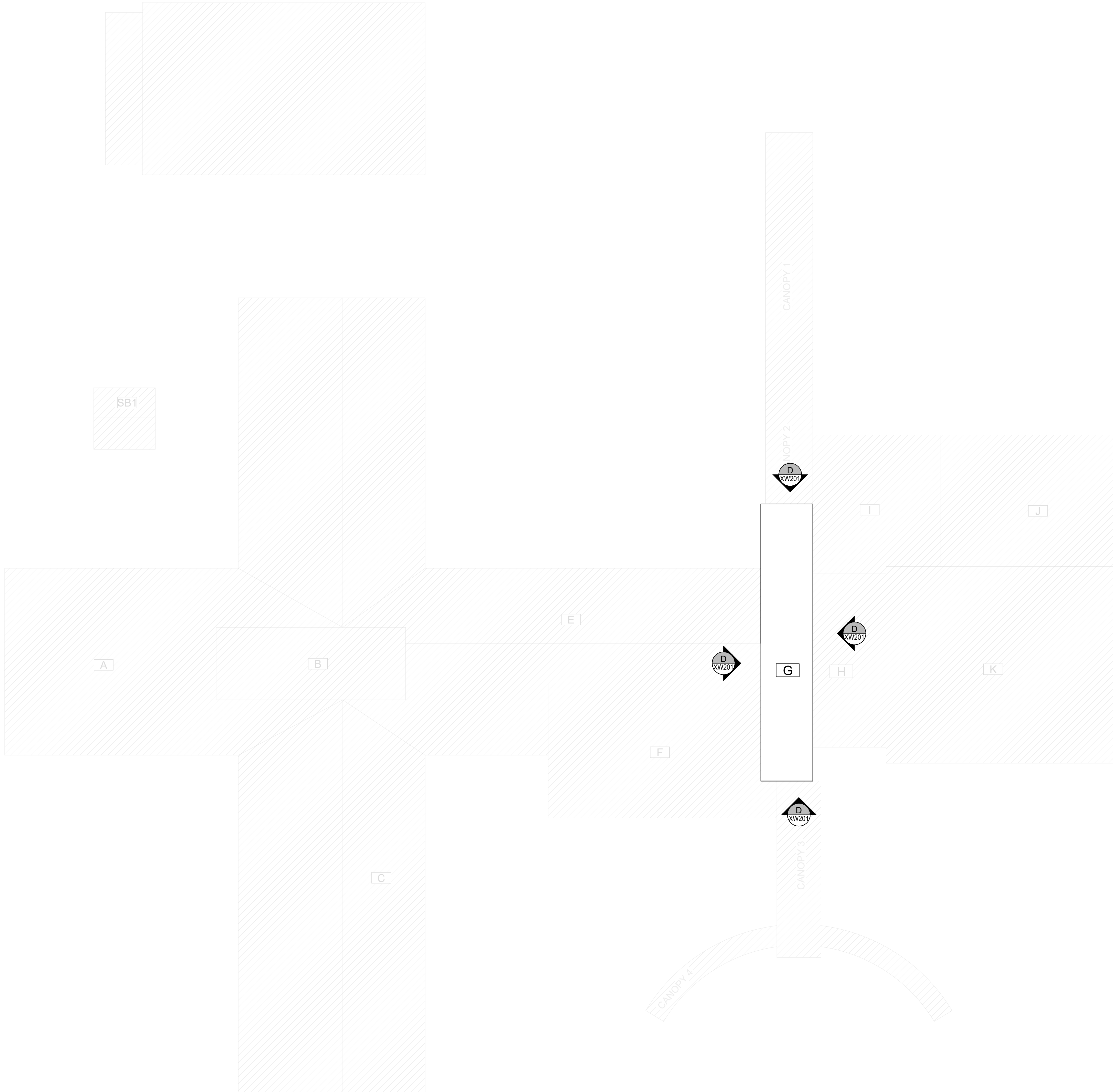
- G-001 COVER
- G-002 BUILDING CODE SUMMARY
- XR101 ROOF PLAN
- XW201 ELEVATIONS
- XW501 EXTERIOR WALL DETAILS

BUILDING CODE REFERENCE:

- 2018 NBC: BUILDING
- 2018 NBC: ENERGY CONSERVATION
- 2018 NBC: EXISTING BUILDING
- 2018 NBC: FIRE PREVENTION
- 2018 NBC: FUEL GAS
- 2018 NBC: MECHANICAL
- 2018 NBC: PLUMBING

GENERAL NOTES & INFORMATION

SCALE: N.T.S.



A PLAN
SCALE: 20'



- GENERAL NOTES:
- THESE DOCUMENTS ARE THE PROPERTY OF REI ENGINEERS, INC. (REI) AND REI RETAINS ALL RIGHTS THEREIN, INCLUDING COPYRIGHTS. IT MAY ONLY BE USED IN A MANNER CONSISTENT WITH REI'S RIGHTS WHILE REI IS PROVIDING SERVICE FOR THE SPECIFIC PROJECT IDENTIFIED OR REFERRED TO HEREIN OR EXTENSIONS THERETO. IT MAY NOT BE USED FOR ANY OTHER PURPOSE EXCEPT WITH THE EXPRESS WRITTEN AGREEMENT OF, AND COMPENSATION TO, REI ENGINEERS, INC.
 - DIMENSIONS, DETAIL COMPONENTS AND EQUIPMENT PENETRATION LOCATIONS ARE FOR INFORMATION ONLY. CONTRACTOR IS RESPONSIBLE TO FIELD VERIFY ALL INFORMATION PROVIDED.
 - ONLY ONE DETAIL INDICATOR MAY BE SHOWN FOR EACH TYPE OF ROOF PENETRATION. ALL OTHER SIMILAR PENETRATIONS ARE TO BE FLASHED AS REQUIRED BY THE TYPICAL DETAIL INDICATOR, UNLESS OTHERWISE NOTED.
 - NOTES ARE INTENDED TO PROVIDE TYPICAL LOCATIONS OF WORK. IT IS THE CONTRACTOR'S RESPONSIBILITY TO QUANTIFY ALL LOCATIONS.

KEY		
	ROOF EDGE	
	ROOF AREA INDICATOR	
	ELEVATION INDICATOR	



ENGINEERS

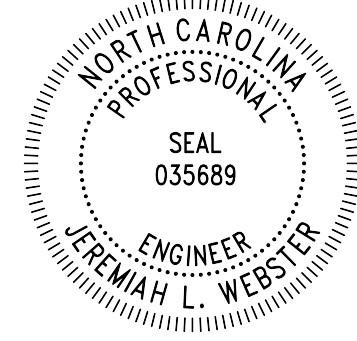
Engineering solutions for tomorrow®

1927 J.N. PEASE PLACE | SUITE 201
CHARLOTTE, NC 28262

NORTH CAROLINA
ENGINEERING FIRM
LICENSE # C-1520

www.reiengineers.com

SEALS:



PROJECT NAME:

BRUNSWICK COUNTY
SCHOOLS

COAST WINDOW
REPLACEMENT

1109 OLD OCEAN HWY.
BOLIVIA, NC 28422

PROJ. NO:

023CLT-085

ISSUE:

NO.	DATE	DESCRIPTION

THIS LINE IS 1 INCH ON
THE ORIGINAL DRAWING

IF IT IS NOT 1 INCH ON THIS PAGE,
SCALE DRAWING ACCORDINGLY.

SHEET TITLE:

ROOF PLAN

DRAWING:

XR101



ENGINEERS

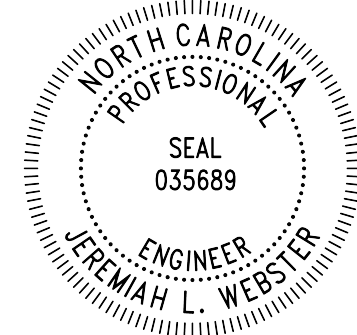
Engineering solutions for tomorrow®

1927 J.N. PEASE PLACE | SUITE 201
CHARLOTTE, NC 28262

NORTH CAROLINA
ENGINEERING FIRM
LICENSE # C-1520

www.reiengineers.com

SEALS:



PROJECT NAME:

BRUNSWICK COUNTY
SCHOOLS

COAST WINDOW
REPLACEMENT

1109 OLD OCEAN HWY.
BOLIVIA, NC 28422

PROJ. NO:

023CLT-085

ISSUE:

NO.	DATE	DESCRIPTION

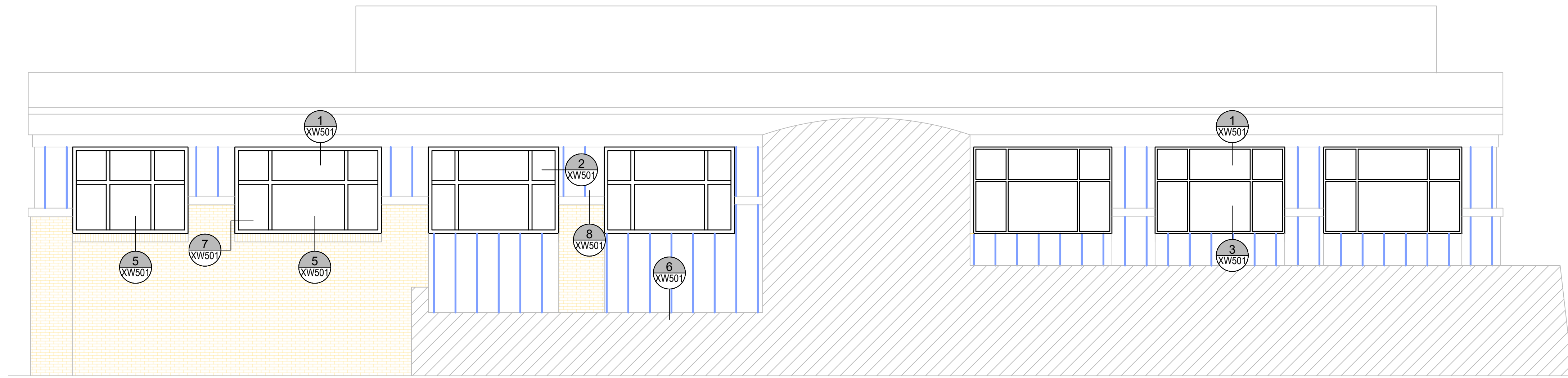
THIS LINE IS 1 INCH ON
THE ORIGINAL DRAWING
IF IT IS NOT 1 INCH ON THIS PAGE,
SCALE DRAWING ACCORDINGLY.

SHEET TITLE:

ELEVATIONS

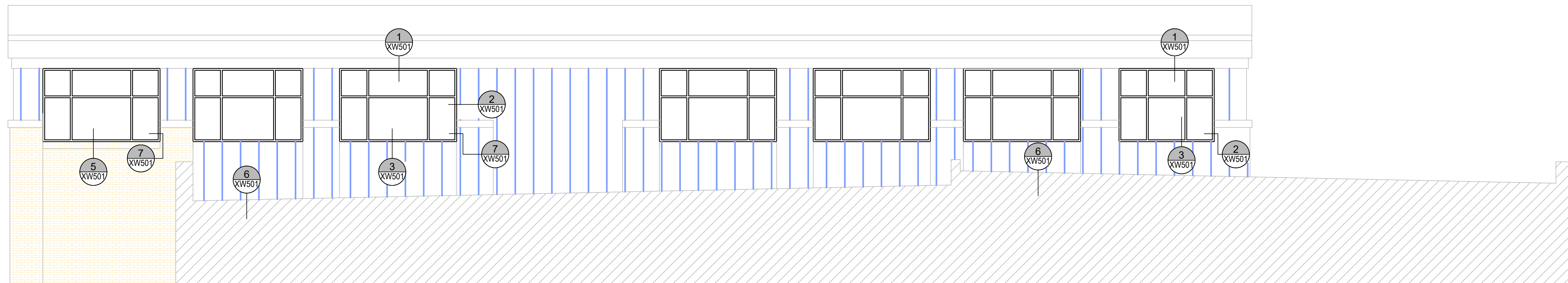
DRAWING:

XW201



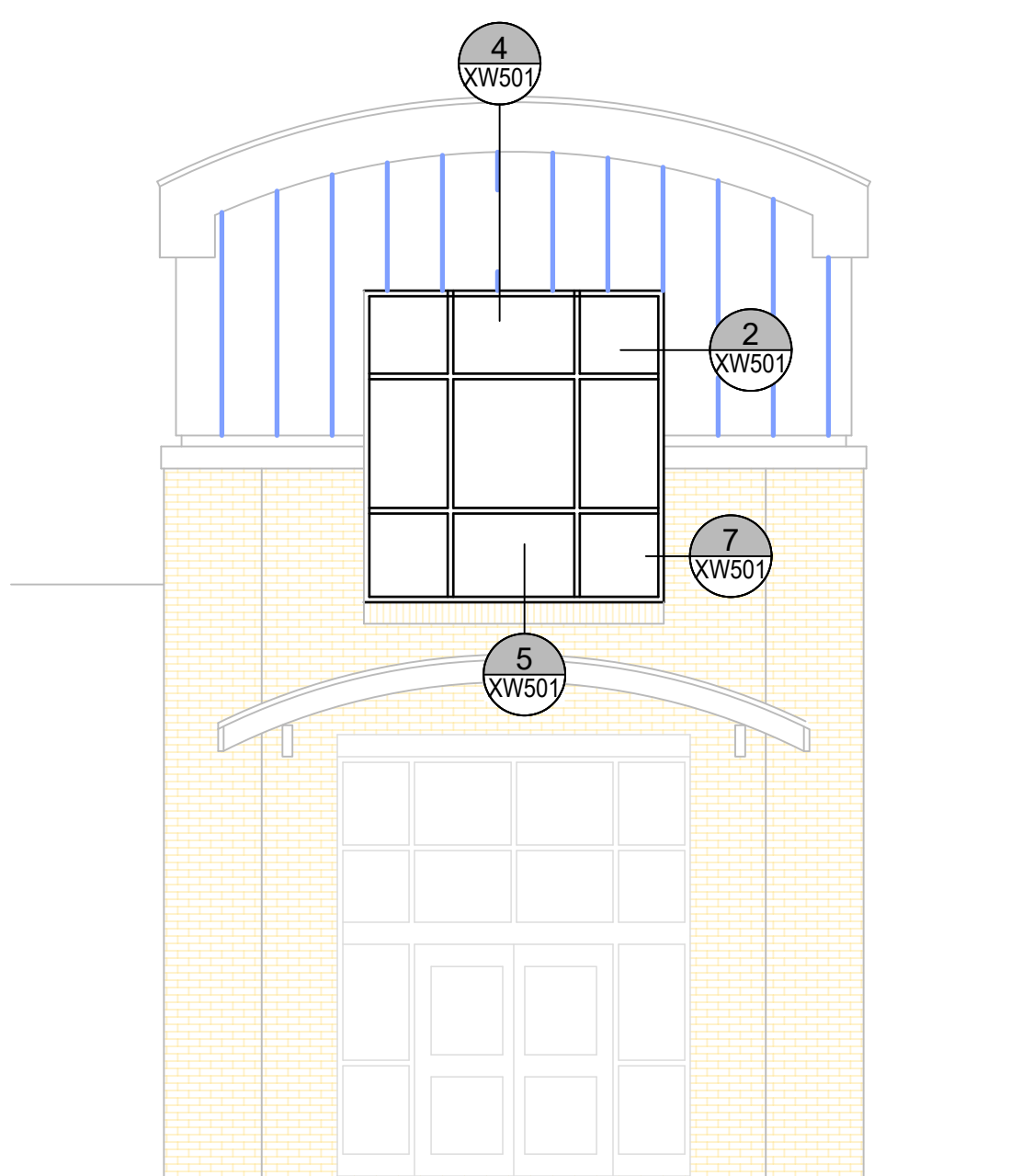
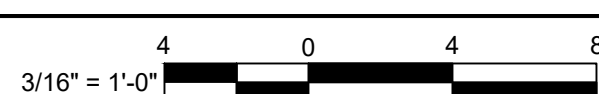
A WEST ELEVATION

SCALE: 3/16" = 1'-0"



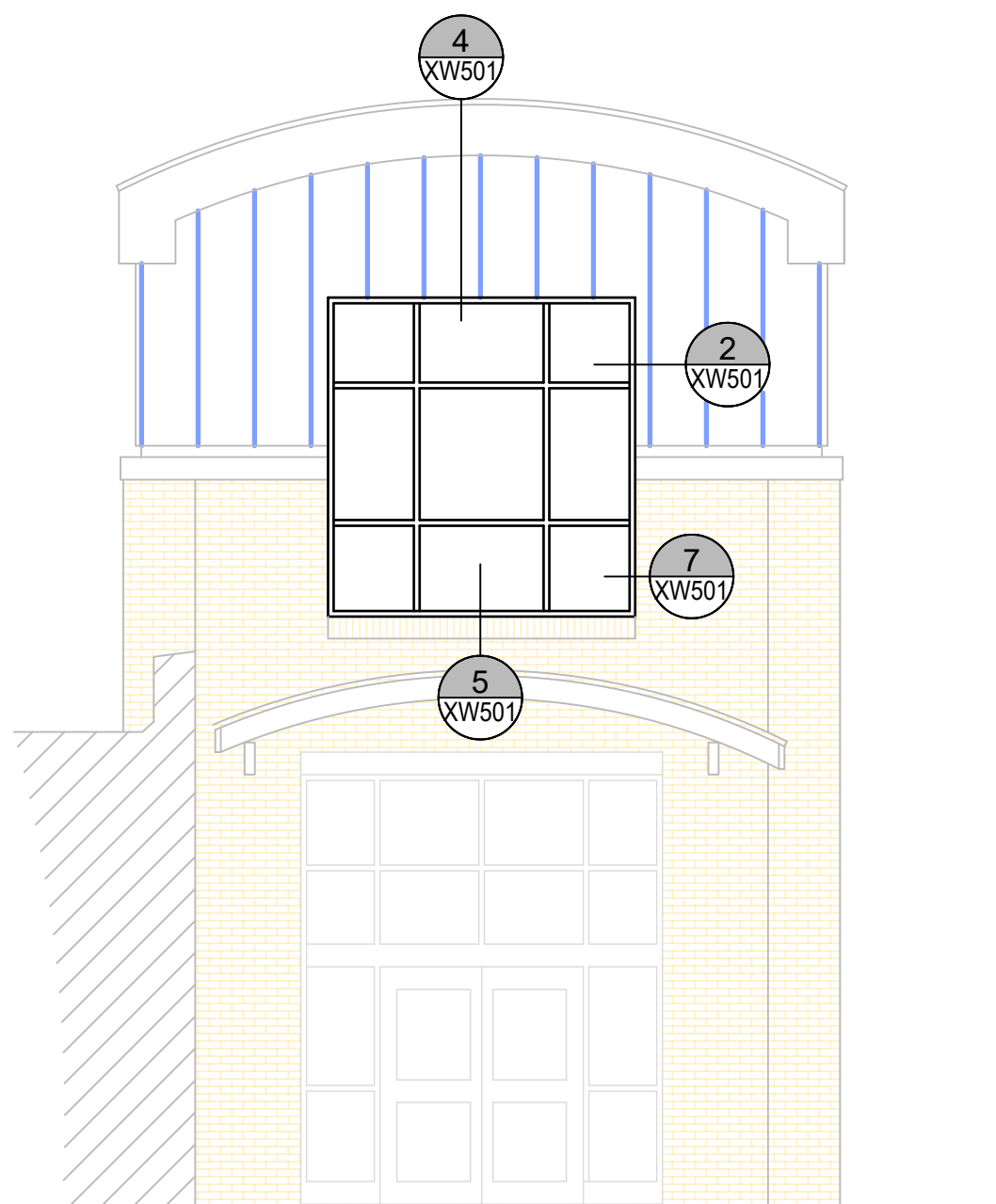
B EAST ELEVATION

SCALE: 3/16" = 1'-0"



C NORTH ENTRANCE ELEVATION

SCALE: 3/16" = 1'-0"



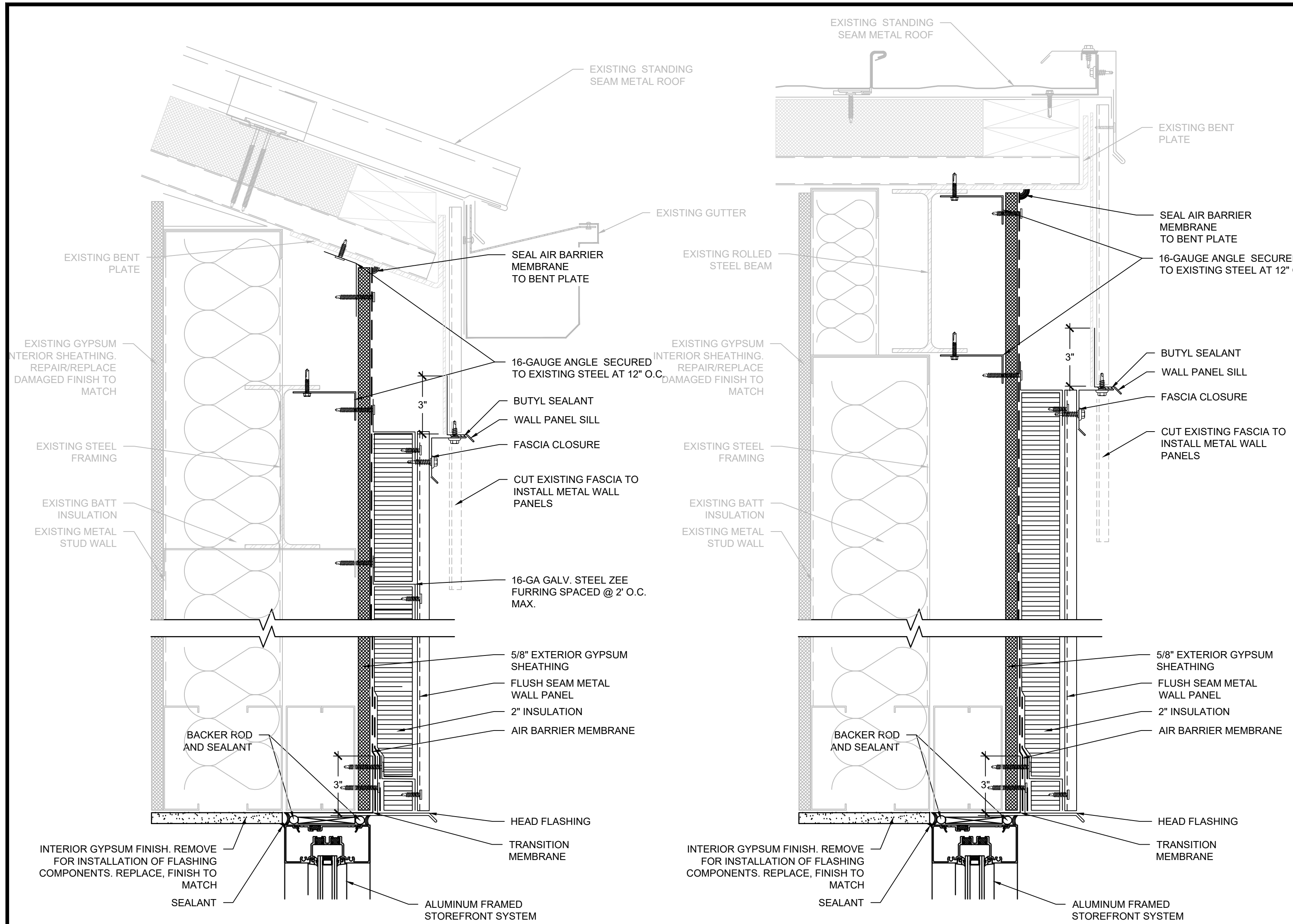
D SOUTH ENTRANCE ELEVATION

SCALE: 3/16" = 1'-0"

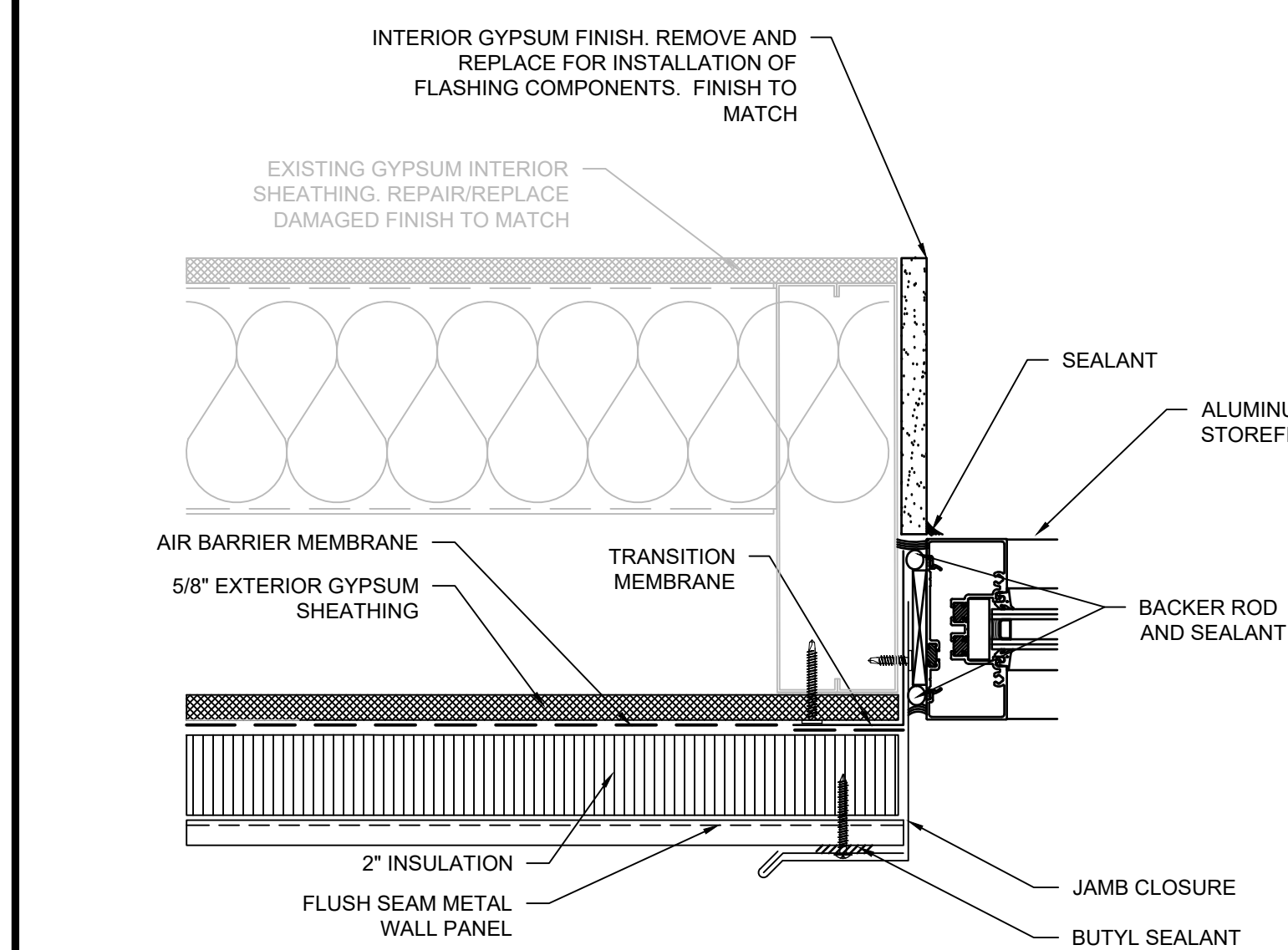


- GENERAL NOTES:
- THESE DOCUMENTS ARE THE PROPERTY OF REI ENGINEERS, INC. (REI) AND REI RETAINS ALL RIGHTS THEREIN, INCLUDING COPYRIGHTS. IT MAY ONLY BE USED IN A MANNER CONSISTENT WITH REI'S RIGHTS WHILE REI IS PROVIDING SERVICE FOR THE SPECIFIC PROJECT IDENTIFIED OR REFERRED TO HEREIN OR EXTENSIONS THERETO. IT MAY NOT BE USED FOR ANY OTHER PURPOSE EXCEPT WITH THE EXPRESS WRITTEN AGREEMENT OF, AND COMPENSATION TO, REI ENGINEERS, INC.
 - DIMENSIONS, DETAIL, COMPONENTS AND EQUIPMENT PENETRATION LOCATIONS ARE FOR INFORMATION ONLY. CONTRACTOR IS RESPONSIBLE TO FIELD VERIFY ALL INFORMATION PROVIDED.
 - ONLY ONE DETAIL INDICATOR MAY BE SHOWN FOR EACH TYPE OF ROOF PENETRATION. ALL OTHER SIMILAR PENETRATIONS ARE TO BE FLASHED AS REQUIRED BY THE TYPICAL DETAIL INDICATOR, UNLESS OTHERWISE NOTED.
 - NOTES ARE INTENDED TO PROVIDE TYPICAL LOCATIONS OF WORK. IT IS THE CONTRACTOR'S RESPONSIBILITY TO QUANTIFY ALL LOCATIONS.
- SHEET NOTES:

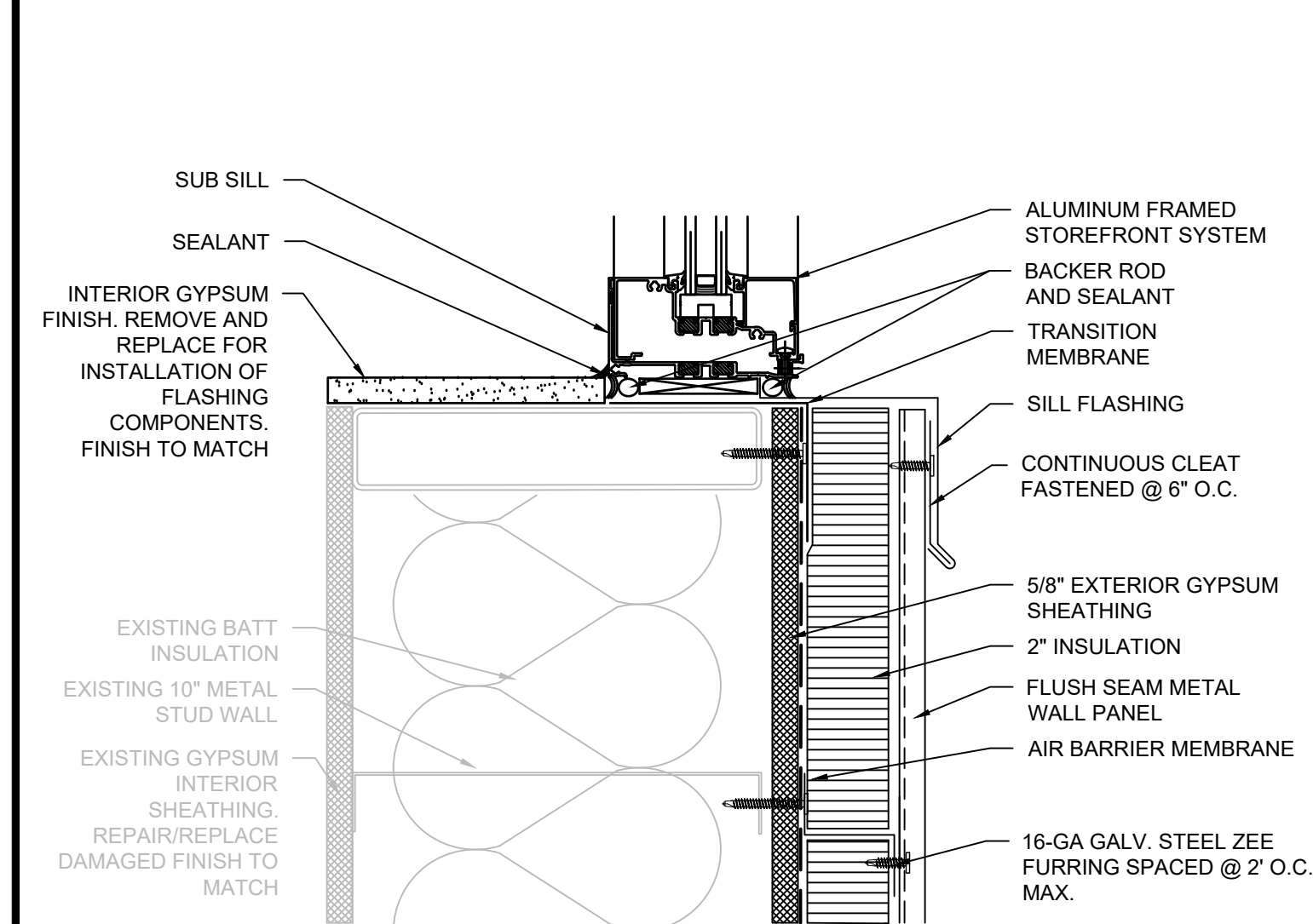
KEY
NOT IN CONTRACT
ROOF AREA INDICATOR
SECTION INDICATOR



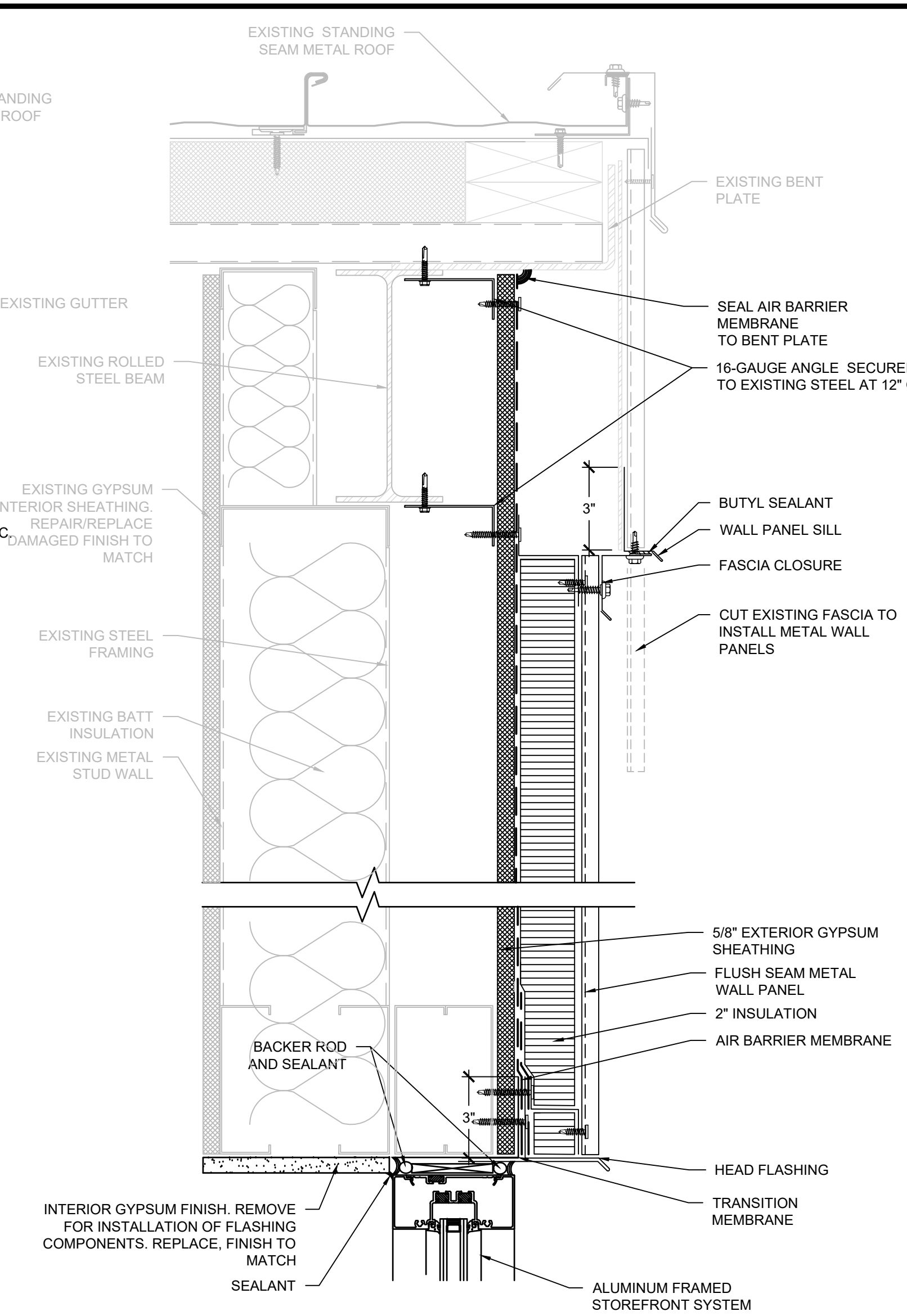
1 HEAD AT GUTTER EDGE
SCALE: 3" = 1'-0"



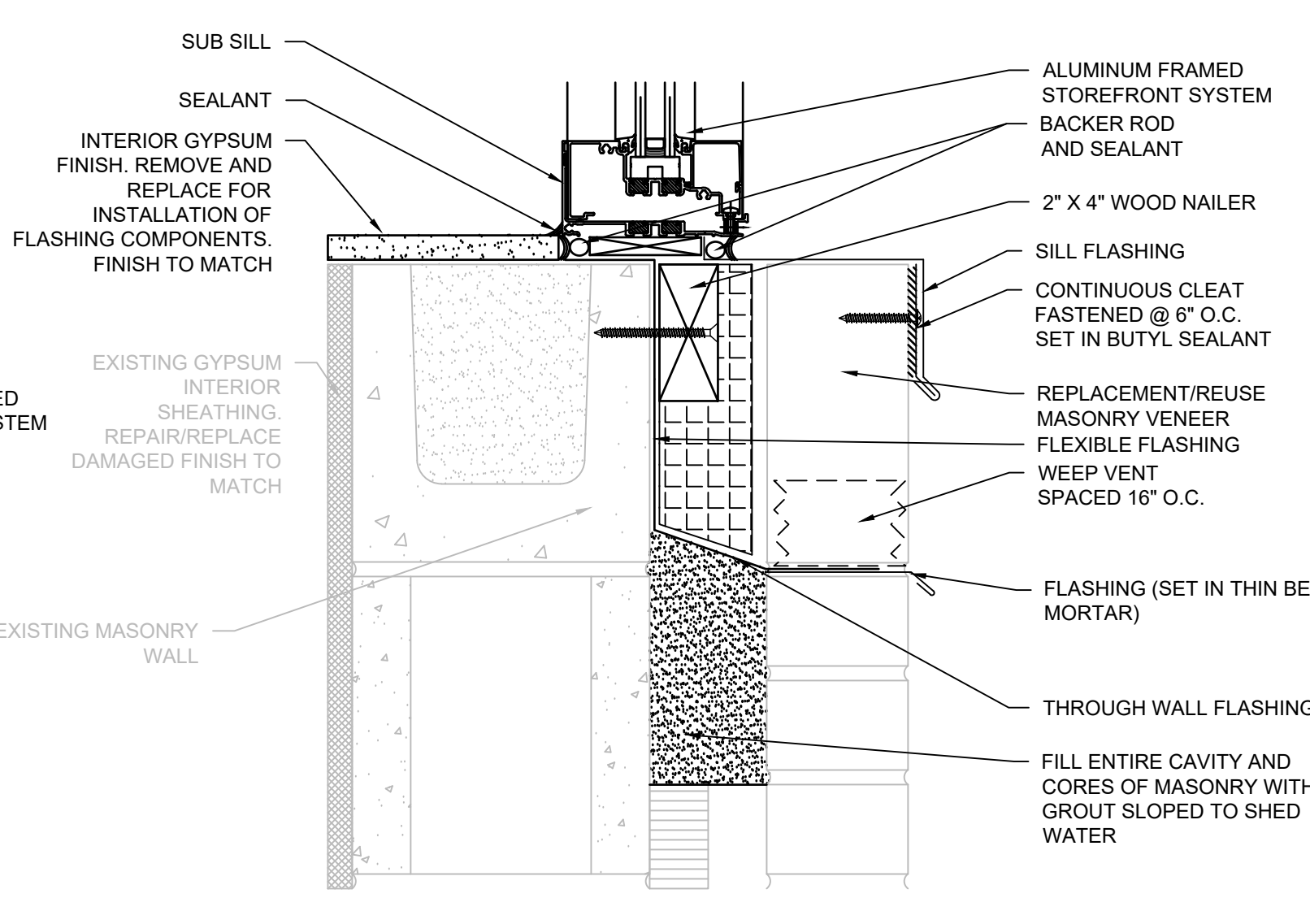
2 JAMB AT METAL PANEL
SCALE: 3" = 1'-0"



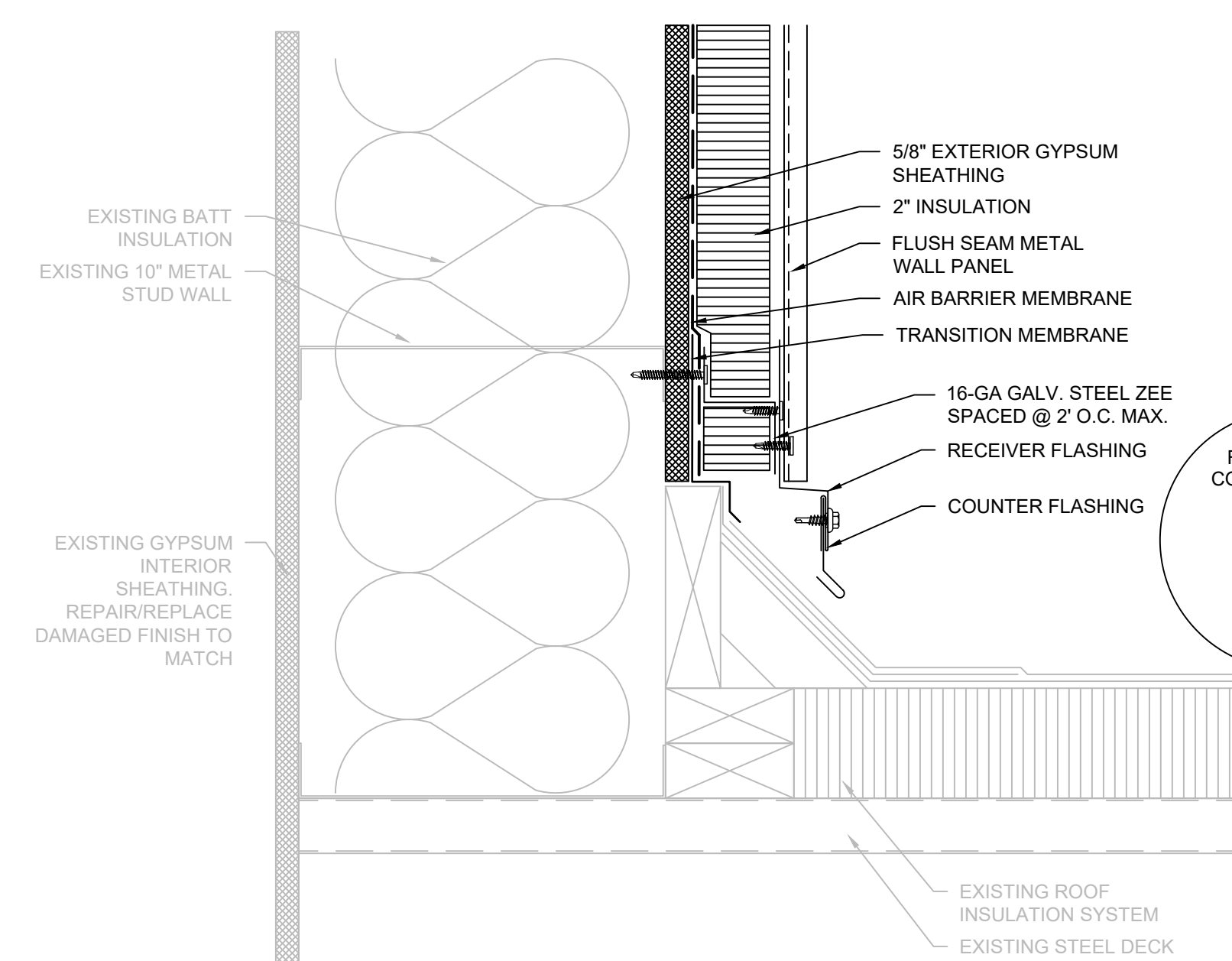
3 SILL AT METAL PANEL
SCALE: 3" = 1'-0"



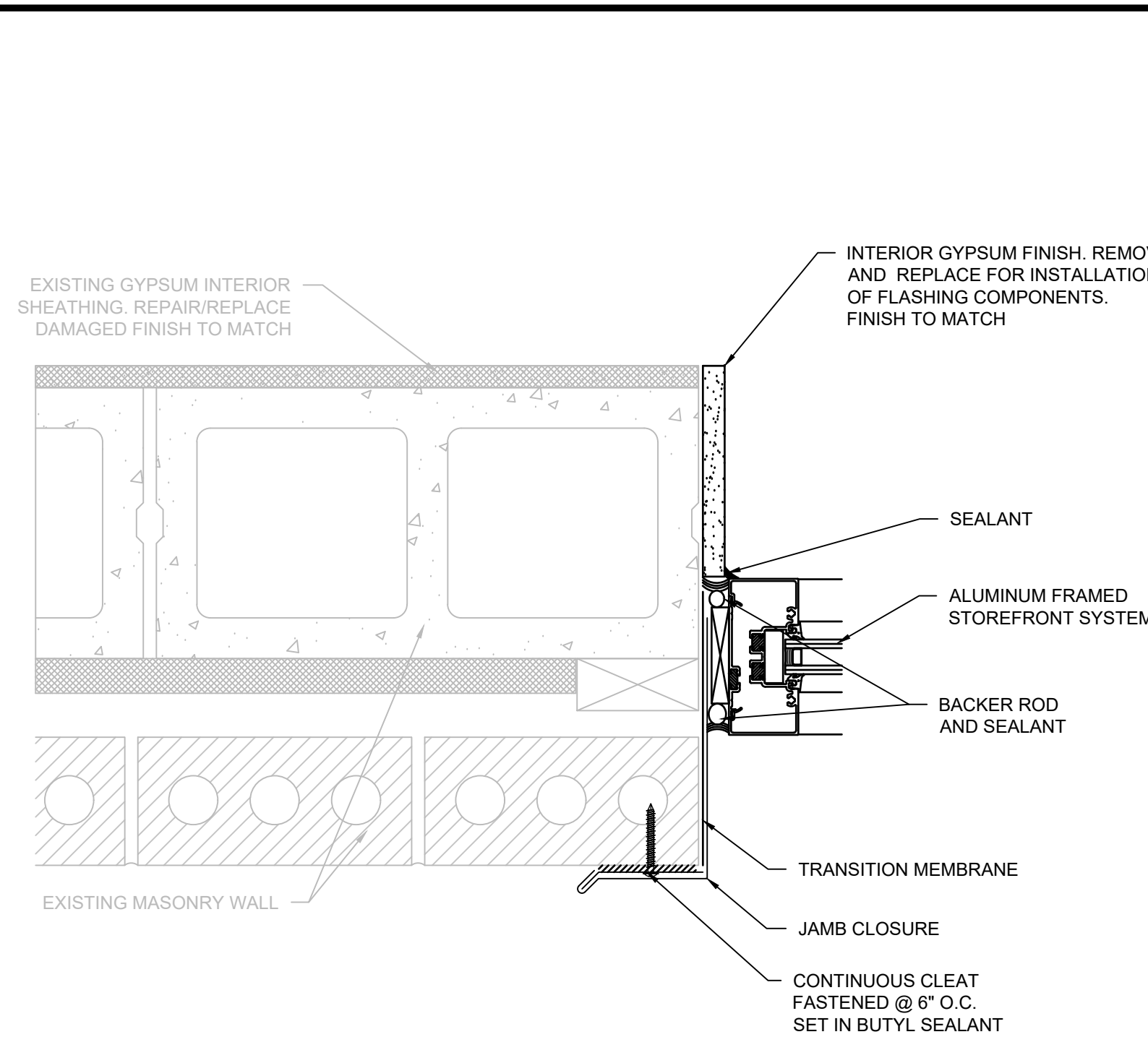
4 HEAD AT RAKE EDGE
SCALE: 3" = 1'-0"



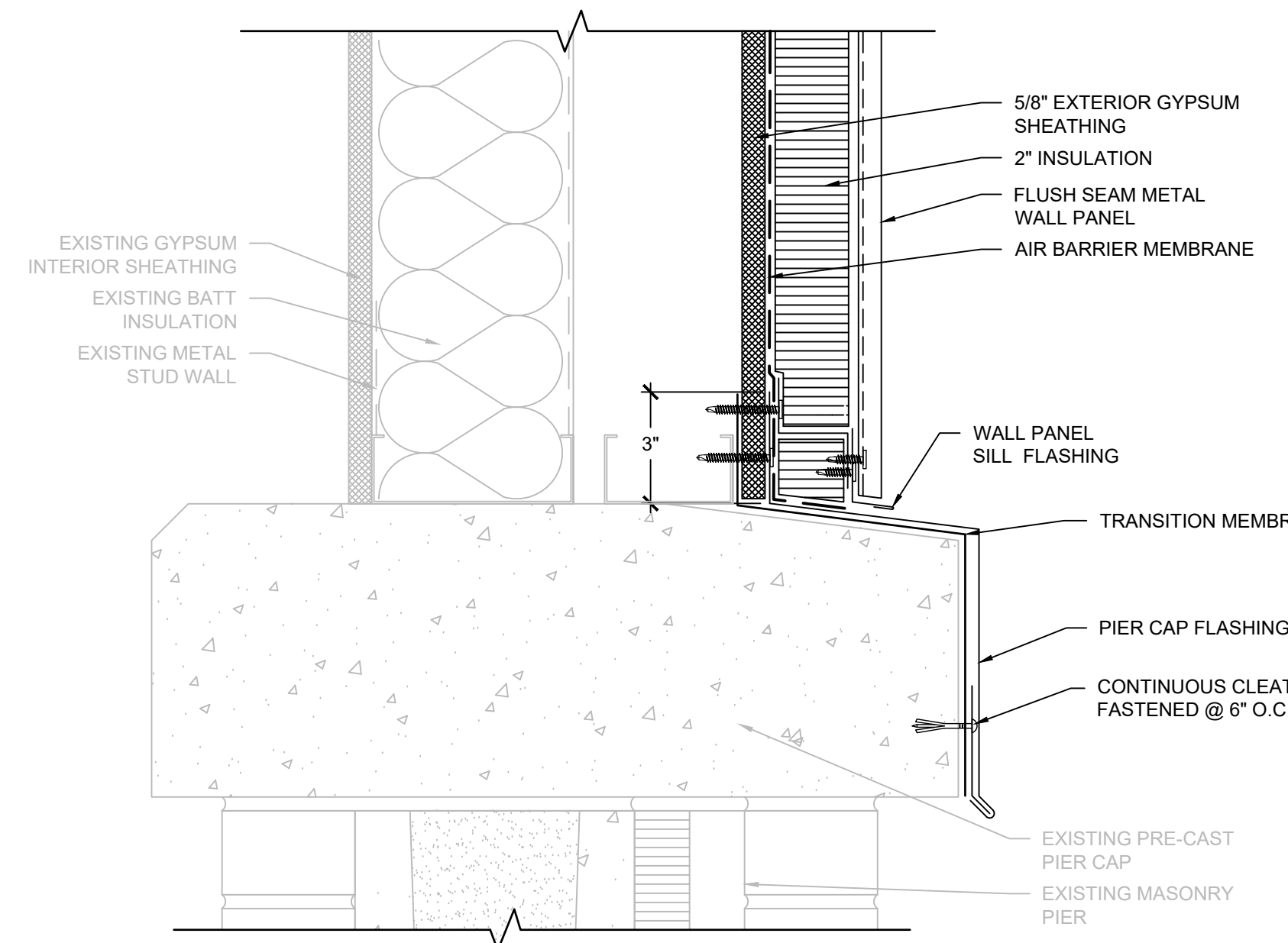
5 SILL AT BRICK
SCALE: 3" = 1'-0"



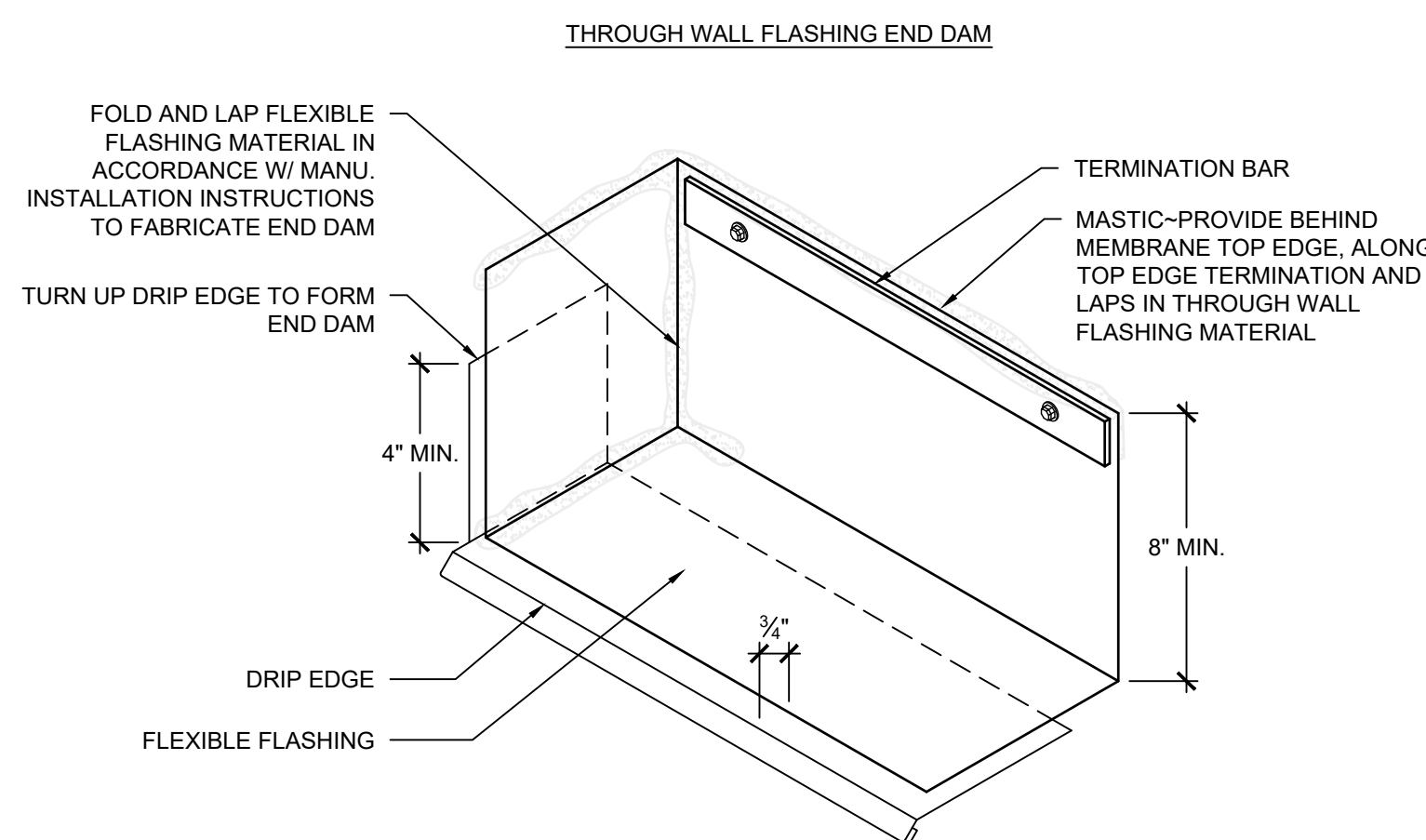
6 ELEVATION WALL
SCALE: 3" = 1'-0"



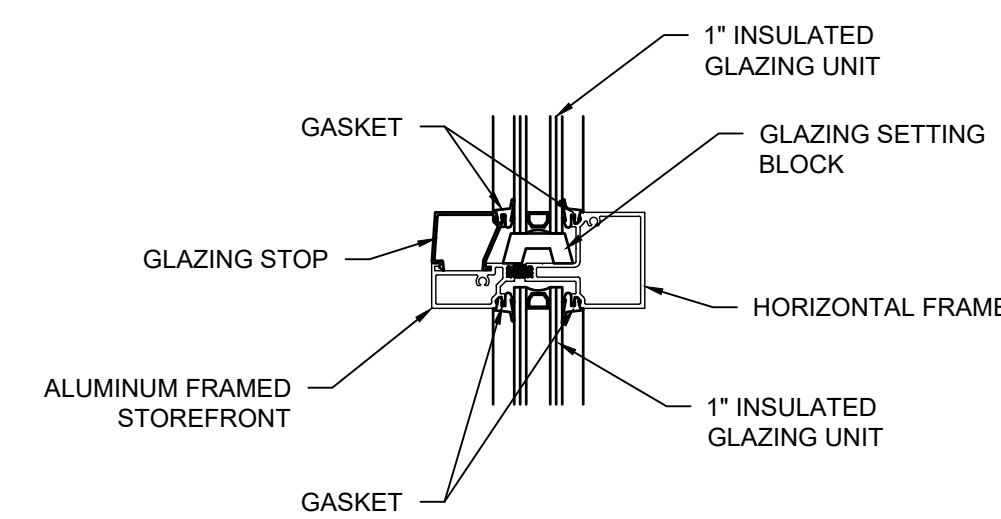
7 JAMB AT BRICK
SCALE: 3" = 1'-0"



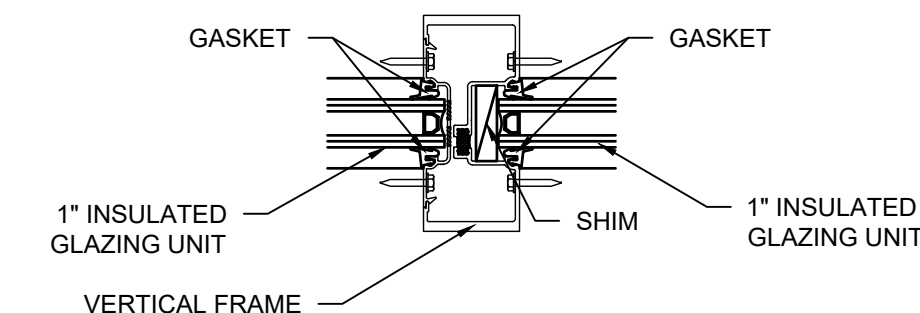
8 WALL PANEL AT PIER
SCALE: 3" = 1'-0"



9 DRIP EDGE END DAM
SCALE: 3" = 1'-0"

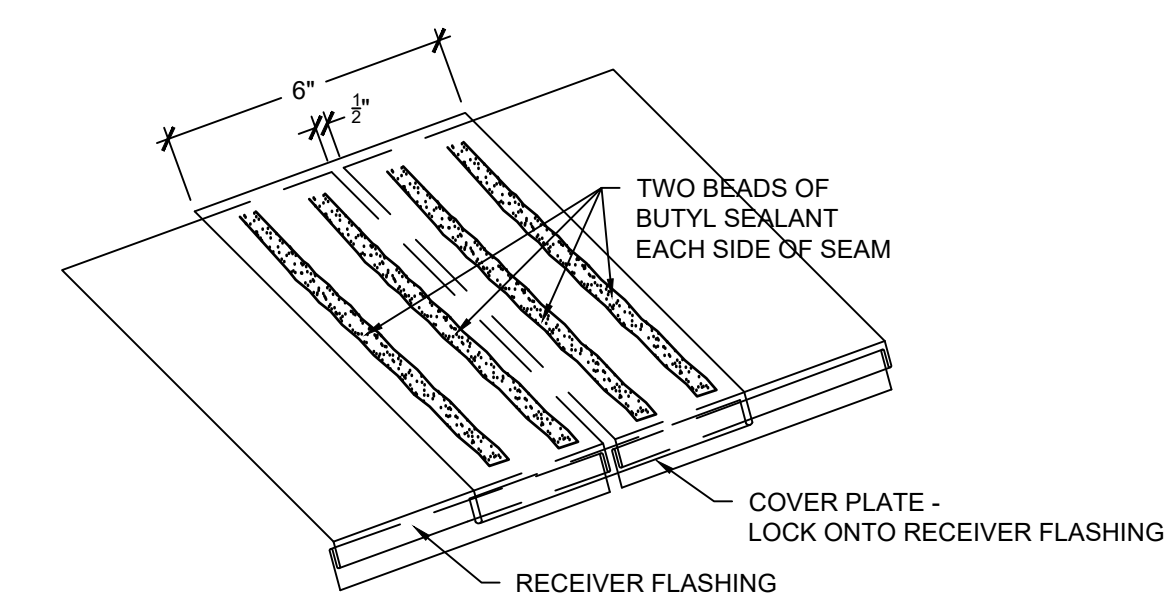


10A INTERMEDIATE HORIZONTAL - FIXED
SCALE: 3" = 1'-0"

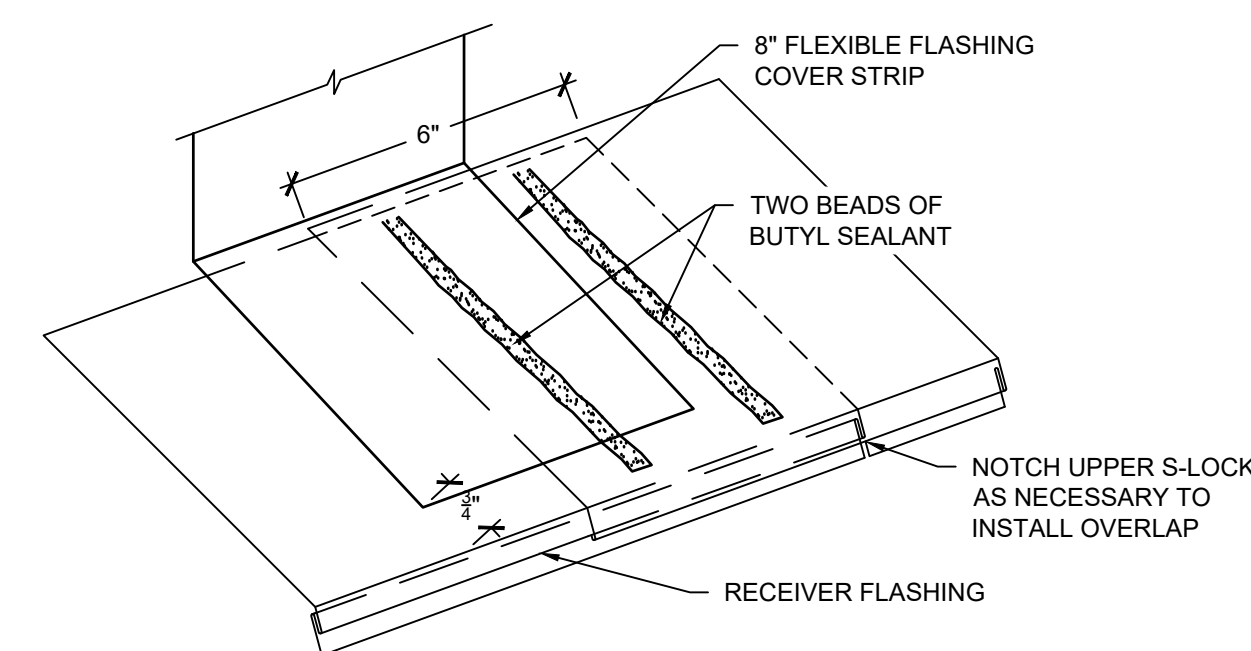


10B INTERMEDIATE HORIZONTAL - OPERABLE
SCALE: 3" = 1'-0"

RECEIVER FLASHING LAP CONFIGURATION AT CONTROL/EXPANSION JOINTS



RECEIVER FLASHING LAP CONFIGURATION



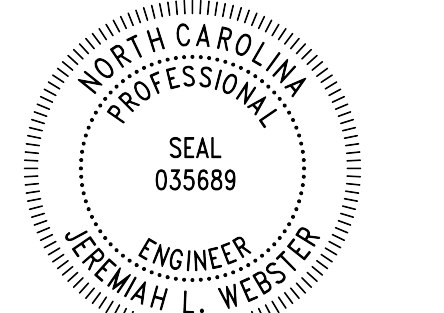
Engineering solutions for tomorrow®

1927 J.N. PEASE PLACE | SUITE 201
CHARLOTTE, NC 28262

NORTH CAROLINA
ENGINEERING FIRM
LICENSE # 0-1520

www.reiengineers.com

SEALS:



GENERAL NOTES:
1. THESE DOCUMENTS ARE THE PROPERTY OF REI ENGINEERS, INC. (REI) AND REI RETAINS ALL RIGHTS THEREIN, INCLUDING COPYRIGHTS. IT MAY ONLY BE USED IN A MANNER CONSISTENT WITH REI'S RIGHTS WHILE REI IS PROVIDING SERVICE FOR THE SPECIFIC PROJECT IDENTIFIED OR REFERRED TO HEREIN OR EXTENSIONS THERETO. IT MAY NOT BE USED FOR ANY OTHER PURPOSE EXCEPT WITH THE EXPRESS WRITTEN AGREEMENT OF, AND COMPENSATION TO, REI ENGINEERS, INC.
2. DIMENSIONS, DETAIL COMPONENTS AND EQUIPMENT PENETRATION LOCATIONS ARE FOR INFORMATION ONLY. CONTRACTOR IS RESPONSIBLE TO FIELD VERIFY ALL INFORMATION PROVIDED.
SHEET NOTES:
1. FOR DETAILS, LIGHT LINES REPRESENT EXISTING CONSTRUCTION TO REMAIN AND DARK LINES REPRESENT NEW COMPONENTS TO BE PROVIDED.
2. ANY WHOLE OR PARTIAL INSULATION BOARD OR PORTION OF ANY BOARD WHICH FALLS IN THE PERIMETERS & CORNERS OUTLINED SHALL BE SUBJECT TO THE FASTENING REQUIREMENTS FOR THE HIGHEST WIND ZONE ENCOUNTERED, ACROSS THE ENTIRE BOARD.

PROJECT NAME:

BRUNSWICK COUNTY SCHOOLS

COAST WINDOW REPLACEMENT

1109 OLD OCEAN HWY.
BOLIVIA, NC 28422

PROJ. NO:

023CLT-085

ISSUE:

NO.	DATE	DESCRIPTION

THIS LINE IS 1 INCH ON THE ORIGINAL DRAWING
IF IT IS NOT 1 INCH ON THIS PAGE, SCALE DRAWING ACCORDINGLY.

SHEET TITLE:

DETAILS

DRAWING:

XW501